



## FLOODS

### Be Prepared Warning

The Be Prepared warning is issued if there is persistent heavy rain in Luc-sur-Aude and/or if the Aude River rises to the 1m mark at Quillanguaging station. Or if the Salz reaches 4m at Cassaignes.

The Council deploys the basic emergency management unit. Everyone in the community is kept informed.

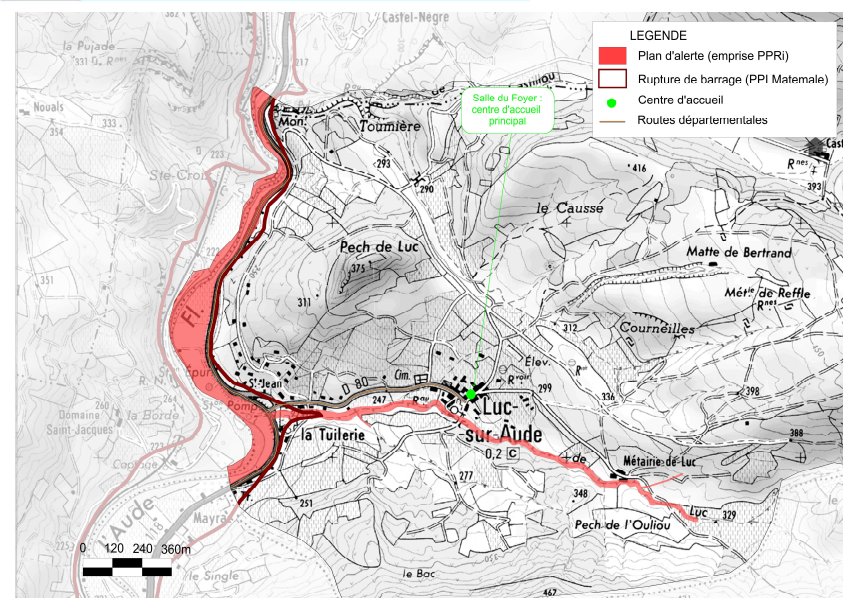
### Emergency action plan:

The emergency action plan enters effect when the Aude River hits the 2m mark at Quillan gauging station or if the Salz reaches 6m at Cassaignes and / or Luc stream start charging the bridge behind the town hall.

<the entire council emergency management unit is deployed. People likely to be in danger are taken to a safe place and the emergency rest centre is opened. Safety measures are taken by closing off flooded roads and additional local flood monitoring is organised.



## DAM BREAKAGE



If the Préfecture or the Rescue Services issue information that dam breakage is imminent or has already occurred, the Montbel Dam Safety Plan comes into effect.

### EMERGENCY REST CENTRE

If you are told to evacuate, please go straight to the **Salle du Foyer** which is the main emergency rest centre.

### SAFETY what to do BEFORE

- Find out about flood risks, their frequency and the areas threatened by flooding (from your Mairie, Préfecture or the State authorities).
- Make sure you have a battery radio.** Tune in to your local radio for information. Wait to be given instructions from the authorities.

### DURING

If an announcement tells you the flood water are rising:

- Close off all doors, basement windows, ventilation, etc., to slow down the water flowing into your house and limit the damage
- Switch off your electricity and gas supply to avoid electrocution and explosions
- Go upstairs. Take the following with you: Drinking water, food supplies, your ID documents, battery radio and battery torch, spare batteries, warm clothing, and any medicine you have to take

### Wait safely for the emergency services

- Tune into your local radio to find out what you should do
- Be prepared to evacuate if the authorities instruct you to back on until everything has been checked.

- Take your ID documents with you and if possible, lock up
- Do not collect your children from school, the school will take care of them
- Do not use your telephone unless absolutely necessary to keep the lines free for the rescue services
- Do not walk or drive into a flooded area. It is extremely dangerous
- Do not stay in your vehicle; it is likely to be washed away
- Do not turn back.

**Don't panic, the rescue services are on their way**

### AFTER

- Air and disinfect rooms
- Find out from the emergency services if your home is accessible.
- Do not switch the power supply and other circuits
- For health reasons, do not drink tap water or well water until the local council tells you it is safe to do so.
- Heat the building as soon as possible.
- Make a list of damage.



## WILDFIRE

If there is a fire, the Community Safety Plan is triggered in conjunction with the emergency and rescue services. Depending on the circumstances and when the emergency and rescue services have assessed the situation, you will either be told to evacuate or to shelter in the nearest building.

### SCRUB CLEARING :

You are **obliged by law to clear all brushwood on your property (at least 50 metres around all dwellings\*)** and to maintain a "safety area" at all times (Article L322-3 of the French Forest Code).  
Clearing the land spaces out vegetation and plant cover. It slows fires down and limits their spread.  
\* the zone to be cleared is adjustable, depending on the surroundings. For further information, contact DDTM on 0468 10 31 00

### SAFETY what to do

#### BEFORE

- Make sure you know where evacuation routes and shelters are
- Have fire-fighting resources (water tanks or taps, a pump for swimming pool water...)
- Clear all scrub around housing and along access routes
- Check the condition of your doors, shutters, windows and roof...

#### DURING

If you are on the spot when the fire breaks out

- Immediately call the fire brigade and give them full accurate details (dial 18 or 112).
- If possible, try to extinguish or control the fire

- Open your gate so the fire brigade can get in quickly
- Close any gas bottles or tanks outdoors and if possible move them away from the building
- Place a damp cloth over your nose and mouth to breathe
- If you are on foot, look for a shield (a rock or a wall)
- If you are in a car, do not get out
- In the countryside, move away along the side of the fire front, your back to the wind
- Stay indoors or shelter in the nearest building - a well-protected building is your best shelter
- Close and water shutters, doors and windows

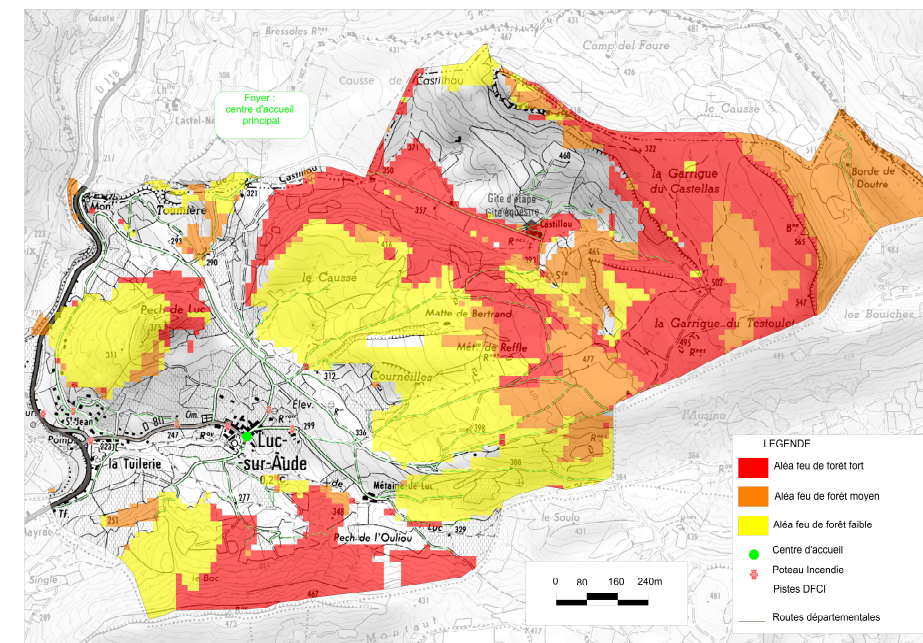
#### Avoid causing a draught

- Block all air inlets with wet cloths (ventilation holes, fire places, etc.)
- Switch off any ventilation systems, bring watering pipes indoors - smoke will reach you before the fire
- Follow the fire brigade's instructions. They know the dangers

**Wildfire pass by quickly  
Don't panic, the rescue service are on their way**

#### AFTER

- Extinguish anything that is still smouldering
- Air and disinfect rooms.



## TRANSPORT OF HAZARDOUS SUBSTANCES

The consequences of an accident causing a spill of hazardous substances depend above all on the substances concerned. The rescue services and the Council will issue special instructions if this type of accident happens.

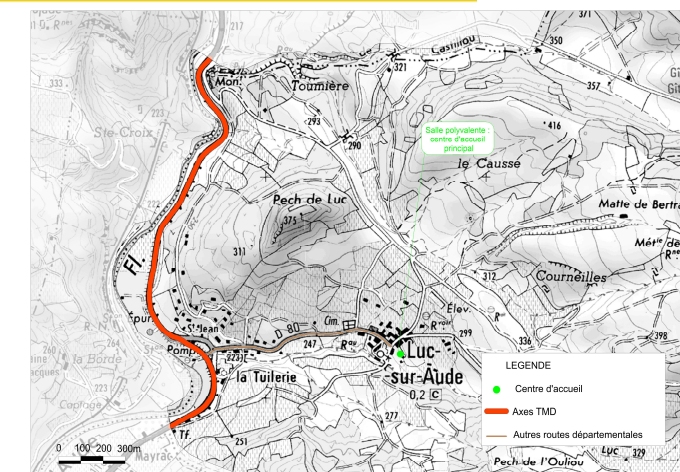
### SAFETY what to do BEFORE

Be aware of the potential danger, the warning signal (community siren) and that you may need to stay indoors.

#### DURING

If witness the accident or spill

- Dial the emergency number (18 or 112 for the fire brigade, 17 for the Police or *Gendarmerie*) and tell them exactly what has happened and where, the type of transport involved, the approximate number of people affected or injured, the number of the product and its danger code (on the coloured diamond sign on the vehicle).
- If anyone has been injured, do not move them unless there is a fire, but move away yourself



- If there are toxic vapours, run away from them in a direction that is perpendicular to the wind, shelter indoors or rapidly leave the area; wash if your skin is irritated and if possible change your clothes
- The community siren will sound the alert

#### AFTER

If you were indoors, air the building when there is no more danger.